

VIDEO WEB SERVER QUICK START

Video Web Server connects to the Internet via an IP address. It could enable our DVR series product or any camera to connect to the Internet for remote monitor or remote control.

Please refer to the Video Server's manual for more detailed information.

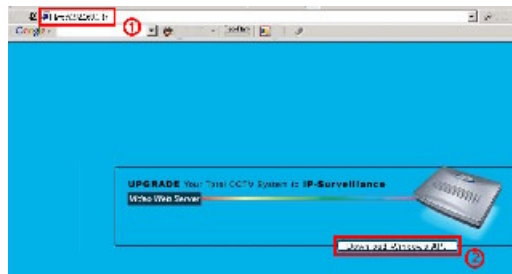
Before operating this video server, please apply a static IP address from your Internet Service Provider.

Note : the following installation software is only compatible with Windows operation system series product.

SOFTWARE INSTALLATION

Step 1 : Connect Video Web Server with PC/NOTEBOOK then set these two devices in the same Domain. Please refer to "STATIC IP SETTING" STEP2.

Step 2 : Please enter the default IP address (192.168.1.1) in the browser. Then press ENTER. Click "Download Windows AP" to download the application Program.



Step 3 : Click twice on Video web server.exe installation file after finished the download and enter the installation.

After the program installation, there are 5 files in your assigned path (file folder) as below. And the program installation is completed.



STATIC IP SETTING

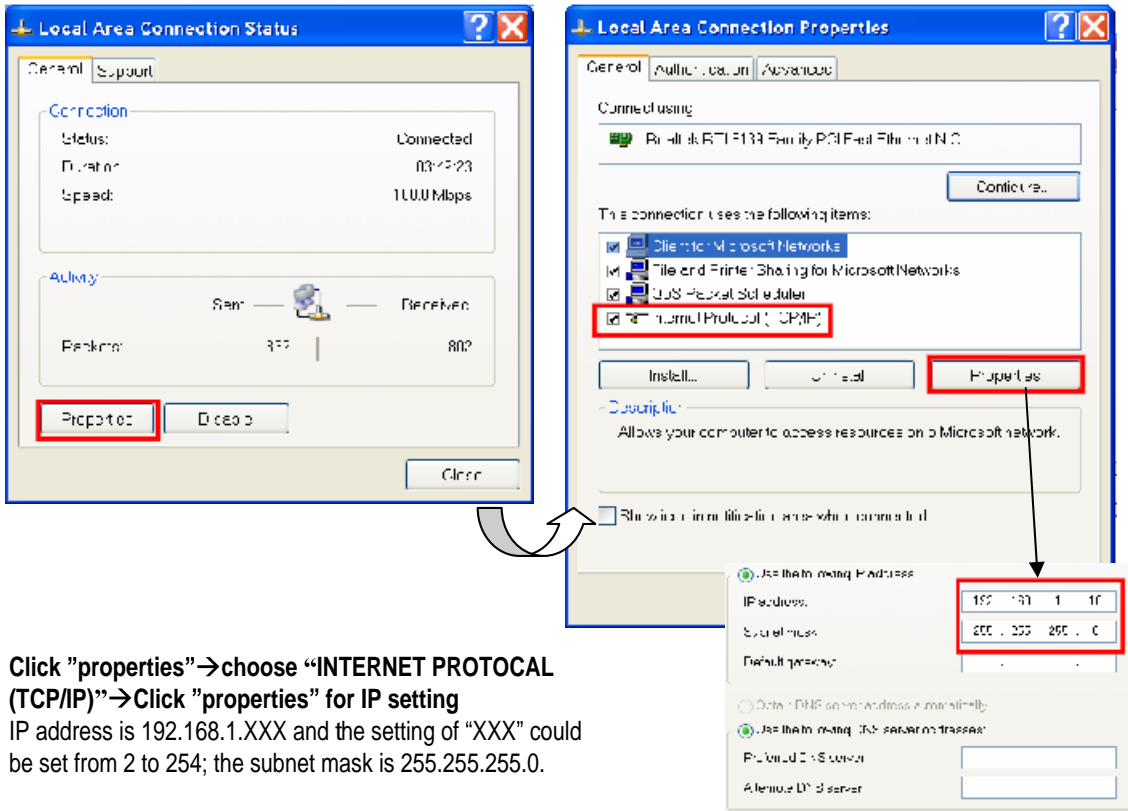
Please set up the server IP before first execution of the program. Follow every step as following. (Users need to apply one static IP address first.) For Dynamic IP setting, please refer to user's manual.

Step 1 : Connect PC/Notebook with Video Web server.


Connect the PC and Video Web Server with standard pass through (CAT5) cable. Then connect the video input with video device (wait around 15 seconds to start the Video Web Server).

Step 2 : Network setting for PC. (The instruction is based on Win XP O/S. Win 2000 and Win2003 are similar as Win XP.)

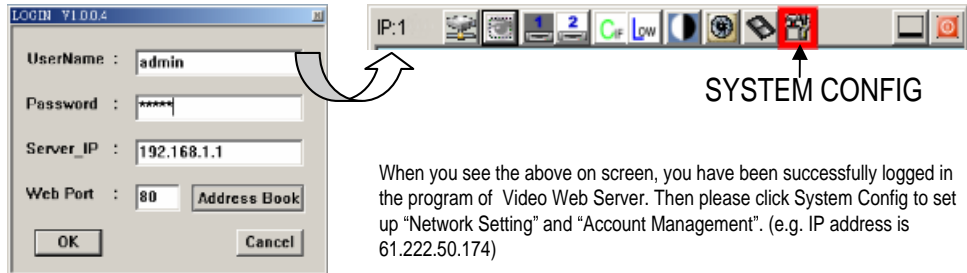




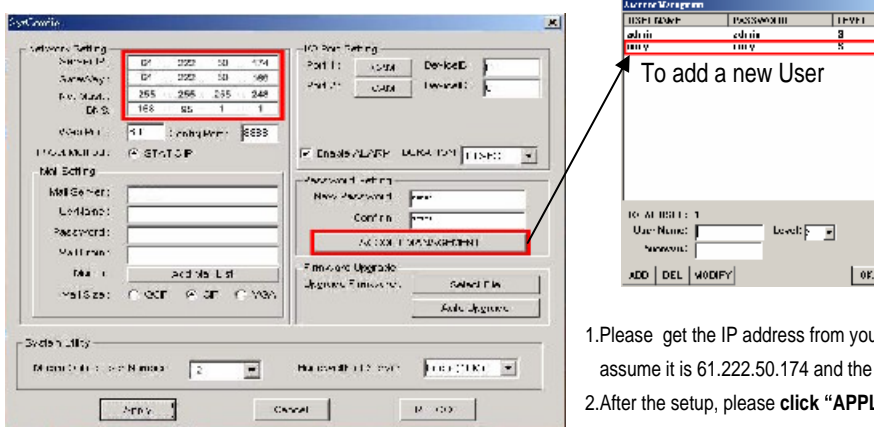
Click "properties" → choose "INTERNET PROTOCOL (TCP/IP)" → Click "properties" for IP setting
 IP address is 192.168.1.XXX and the setting of "XXX" could be set from 2 to 254; the subnet mask is 255.255.255.0.

Step 3 : To set up the Server IP, please click  twice to enter the setup.

Step 4 : Key in User Name, Password, and IP address (User Name and Password is default at "admin"; IP address is default at 192.168.1.1). Then click OK to connection.

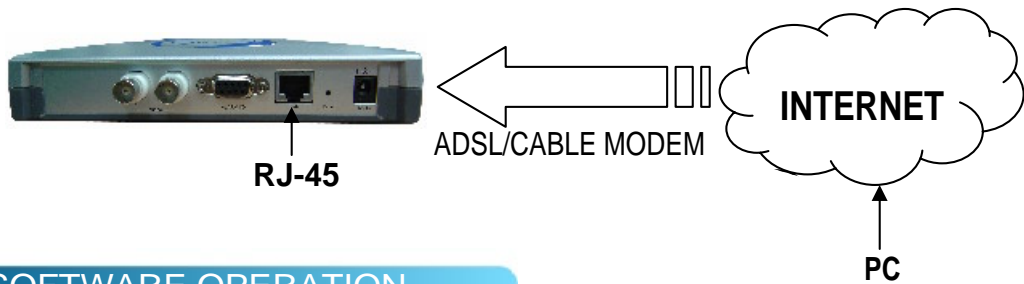


When you see the above on screen, you have been successfully logged in the program of Video Web Server. Then please click System Config to set up "Network Setting" and "Account Management". (e.g. IP address is 61.222.50.174)



1. Please get the IP address from your Internet Service Provider. Here we assume it is 61.222.50.174 and the user name and password is "andy".
2. After the setup, please click "APPLY" to renew the information.

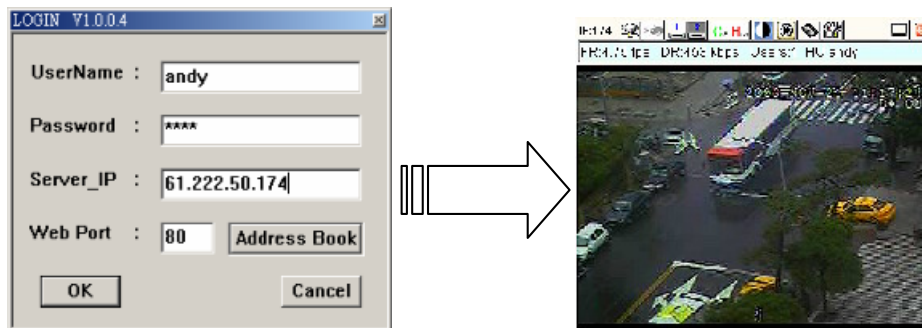
Step 5 : Connect the Video Web Server with ADSL or Cable modem through RJ-45 PORT, then it can operate from the internet.



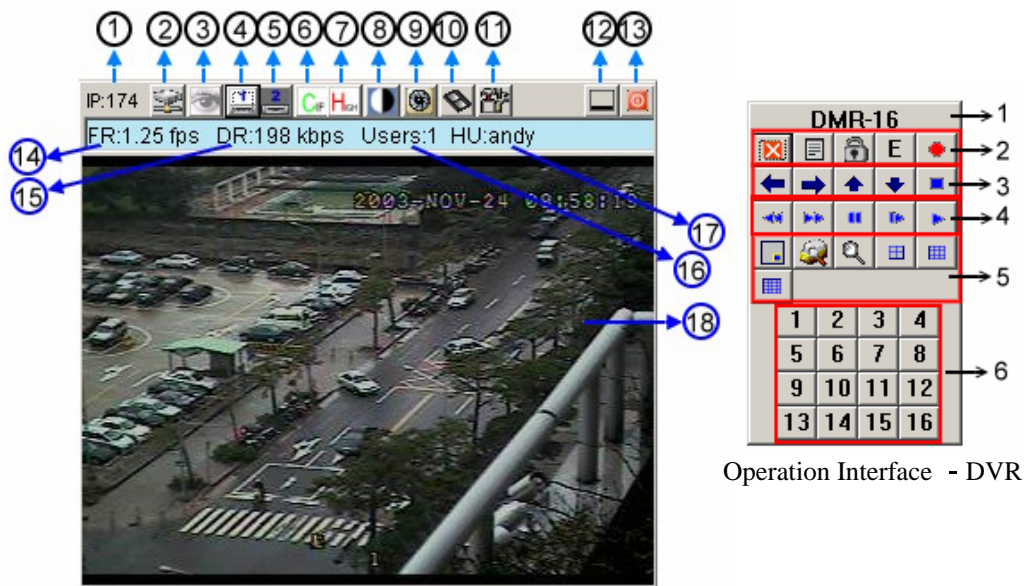
SOFTWARE OPERATION

Step 1 : Click  twice to enter Login setup. (You can refer to “software installation”.)

Step 2 : Key in “User Name” and “ Password” (e.g. “User Name” and “Password” are “andy” and the IP address is 61.222.50.174). Then click “OK” to enter connection. When you see below window with your video, it means you have connected the Video Server successfully.



OPERATION INTRODUCTION



Operation Interface - Video Server

Operation Interface - DVR

Operation Interface - Video Server

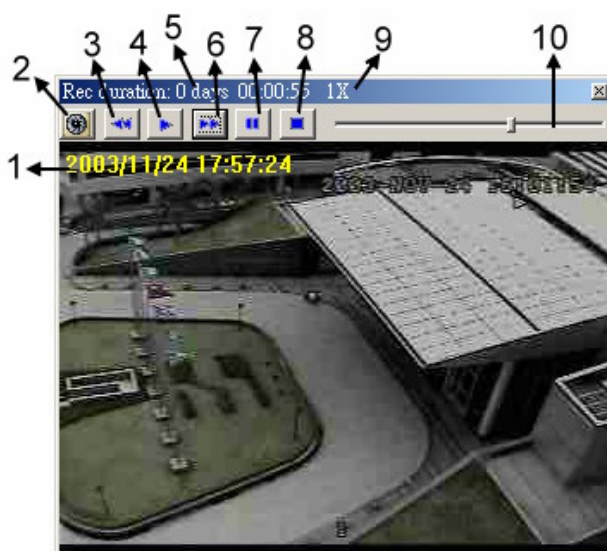
- | | |
|--|---|
| 1.IP address, assumed setting as 61.222.50.174 | 10.Record |
| 2.Connection/ Disconnection | 11.System setting |
| 3.Conceal/ Resume video screen | 12.Minimize |
| 4.Video CH1 | 13.Exit |
| 5.Video CH2 | 14.Image transmission rate per second |
| 6.Resolution: CIF/ VGA | 15.Data transmission rate |
| 7.Image quality : High/ Middle/ Low | 16.Number of online users |
| 8.Image adjusting : Brightness/ Contrast/ Saturation | 17.Host User |
| 9.Snapshot | 18.Window size adjust (press right mouse key in the Video screen frame for 100%/ 150%/ 200% / Full Screen) |

Operation Interface - DVR

- 1.Using device
- 2.Exit, Menu, Lock, Enter, Record
- 3.Left, Right, Up, Down, Stop
- 4.Rewind, Fast Forward, Pause, Slow, Play
- 5.PIP, Search, Zoom, quad screen, 7-9-10-13-16 screen
- 6.Camera video input



PLAYBACK OPERATION



- 1.ON SCREEN DISPLAY
- 2.Snapshot
- 3.Slow playback (1/2, 1/4, 1/8)
- 4.Play
- 5.Recording duration time
- 6.Fast Forward
- 7.Pause
- 8.Stop
- 9.Executing function
- 10.Playback bar